

STEEL FAB

Manufacturers of ASME steel pressure vessels in all sizes for all industries.

We are one of the largest manufacturers of ASME (American Society of Mechanical Engineers) pressure vessels in North America serving the air compressor and the metal stamping press industries and other related sub-industries.

We manufacture both small high volume production line tanks and larger specialty vessels. They range in size from 4" to 120". There are three production lines serving the small tanks and one large production area for the specialty tanks. In-house capabilities include application of primers and special coatings when specified by the customer.

Our manufacturing facility has CNC plate rolling, CNC punching, robotic plasma cutting and welding, powder painting and other equipment for handling fabrication of carbon and stainless steel generally under 1" in thickness.

We keep an in-stock inventory to ship out on short notice. Several distribution centres in Canada and the U.S.A. cover most of the North American continent for local delivery and service.

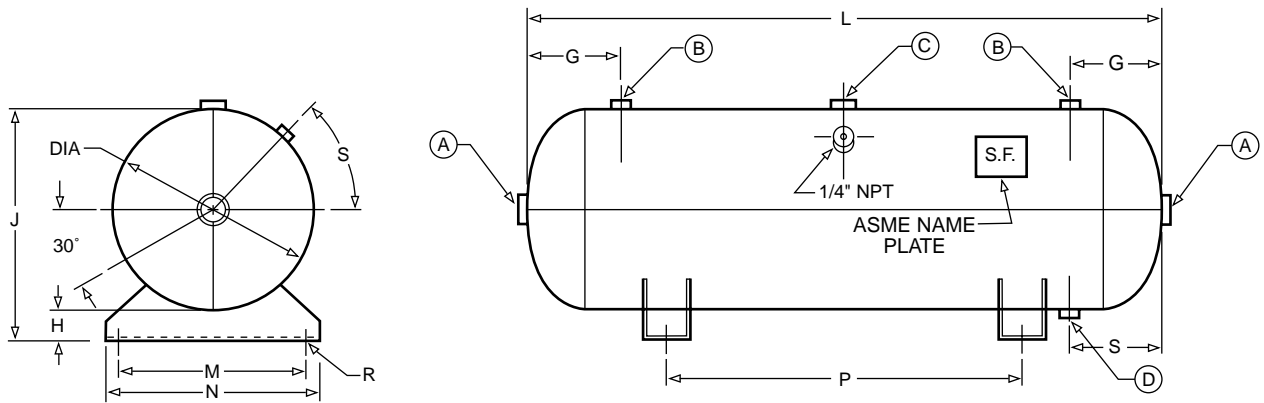


View of our powder paint system. This state-of-the-art operation can accommodate tanks up to 48" in diameter. Tanks receive a hard, durable paint finish, providing increased corrosion protection.



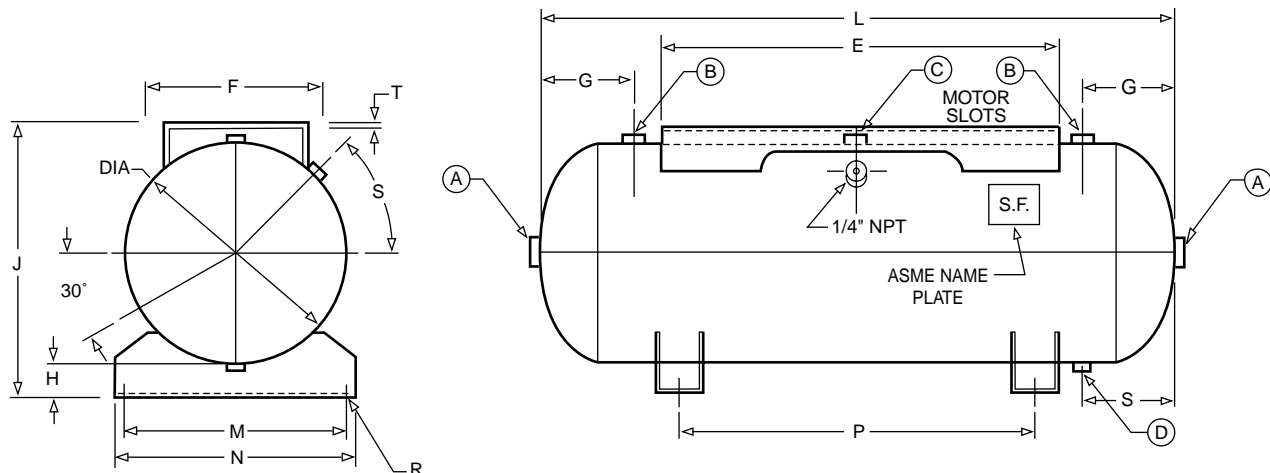
The installation of the robotic welding and plasma cutting have increased production speed resulting in growth of sales by over 5%. These two pieces of equipment enable us to be very competitive in the high volume small tank market to serve a wide variety of industries. The two robots shown above can perform either of the two functions, welding or plasma cutting.

HORIZONTAL AIR RECEIVERS WITH FEET ONLY



P/N	GAL	DIA	L	OPENINGS (NPT) "				DIMENSIONS "										
				A	B	C	D	E	F	G	H	J	T	M	N	P	R	S
A10023*	12	12	27	3/4	1/2	1/2	1/4	-	-	5-1/2	1-3/16	13-3/16	-	11	12	14	1/2	5-1/2
A10025*	20	14	33	1-1/2	1/2	1/2	1/4	-	-	6	2	16	-	14	15-1/2	18	1/2	6
A10027	30	16	38	1-1/2	1/2	3/4	1/4	-	-	6	2-1/2	18-1/2	-	15	19	18	9/16x1	6
A10029	60	20	48	2	3/4	1	1/2	-	-	7-3/4	3-3/16	23-3/16	-	18-3/4	21	26	9/16x1	7-1/4
A10031	80	20	63	2	1	1-1/2	3/4	-	-	9	3-3/16	23-3/16	-	18-3/4	21	36	9/16x1	9
A10033	120	24	69	2	1-1/2	1-1/2	3/4	-	-	10	3-1/2	27-1/2	-	23-3/4	26-1/2	42	9/16x1	9
A10035	200	30	72	2	2	2	1	-	-	12	4	34	-	27-1/2	30	42	9/16x1	10-1/4
A10037	240	30	84	2	2	2	1	-	-	12	4	34	-	27-1/2	30	54	9/16x1	10-5/8

HORIZONTAL AIR RECEIVERS WITH FEET AND TOPPLATE



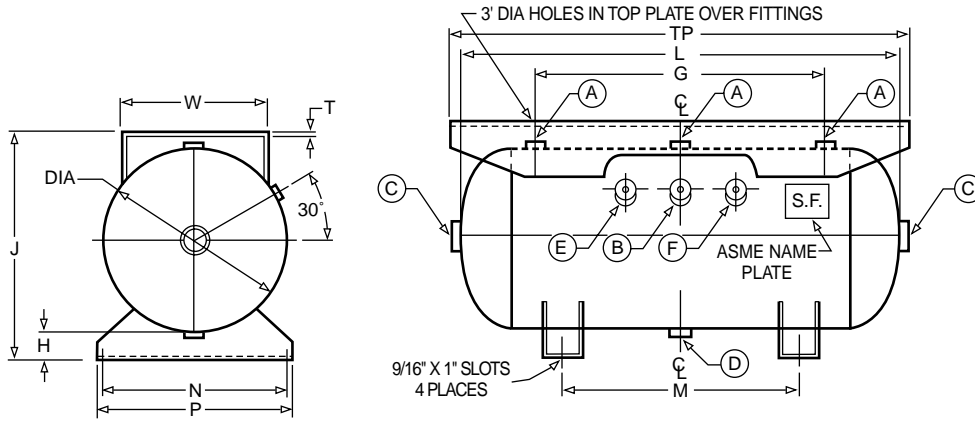
P/N	GAL	DIA	L	OPENINGS (NPT) "				DIMENSIONS "										
				A	B	C	D	E	F	G	H	J	T	M	N	P	R	S
A10024*	12	12	27	3/4	1/2	1/2	1/4	15	9	5-1/2	1-3/16	14-5/8	3/16	11	12	14	1/2	5-1/2
A10026*	20	14	33	1-1/2	1/2	1/2	1/4	19	10	6	2	17-1/2	3/16	14	15 1/2	18	1/2	6
A10028	30	16	38	1-1/2	1/2	3/4	1/4	24	12	6	2-1/2	20	3/16	15	19	18	9/16x1	6
A10030	60	20	48	2	3/4	1	1/2	30	14	7-3/4	3-3/16	24-3/4	3/16	18-3/4	21	26	9/16x1	7-1/4
A10032	80	20	63	2	1	1-1/2	3/4	36	14	9	3-3/16	24-3/4	3/16	18-3/4	21	36	9/16x1	9
A10034	120	24	69	2	1-1/2	1-1/2	3/4	44	16	10	3-1/2	29-1/4	1/4	23-3/4	26-1/2	42	9/16x1	9
A10036	200	30	72	2	2	2	1	44	18	12	4	35-13/16	1/4	27-1/2	30	42	9/16x1	10-1/4
A10038	240	30	84	2	2	2	1	48	18	12	4	35-13/16	1/4	27-1/2	30	54	9/16x1	10-5/8

*12 and 20 Gal. receivers have 4 pressed steel feet. All others have channel as shown.

Note: Receivers listed above are available without feet and topplate (slick receivers).

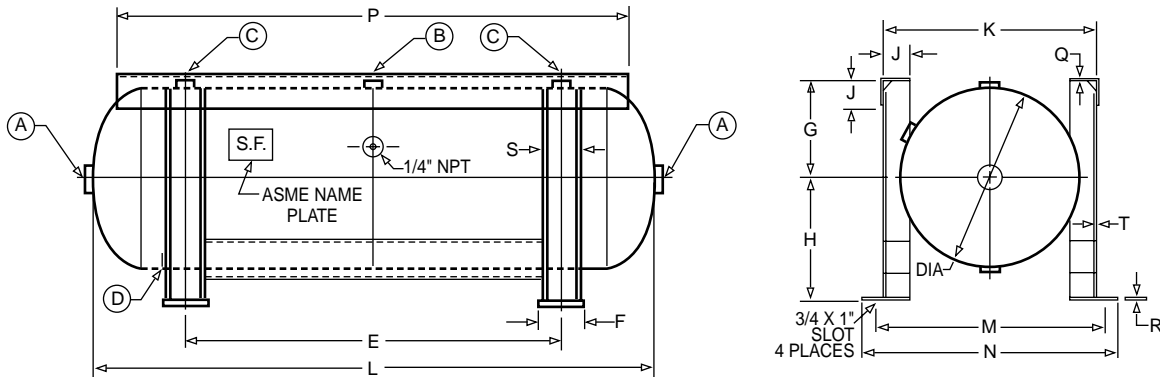
• All volume capacities listed in this brochure are U.S. gallons. • All dimensions listed in this brochure are subject to change without notice. For installation dimensions consult factory.

HORIZONTAL AIR RECEIVERS WITH EXTENDED TOPPLATE



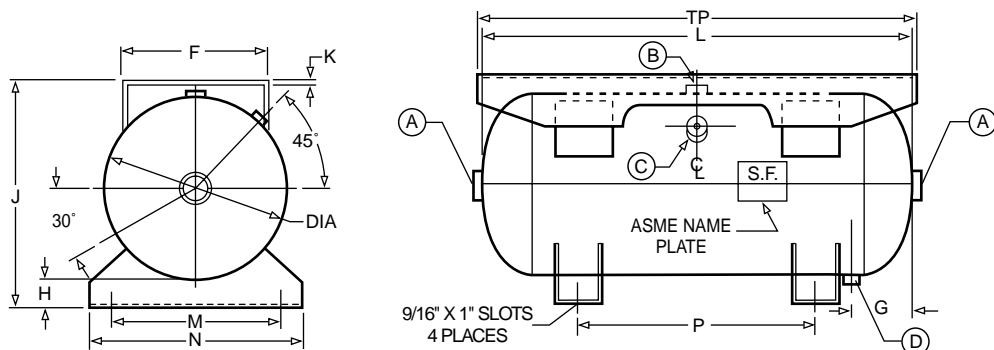
P/N	GAL	DIA	L	OPENINGS (NPT) "								DIMENSIONS "							
				J	A	B	C	D	E	F	G	TP	W	T	M	N	P	H	
A10136	30	16	38	20	3/4	1/4	1-1/2	1/4	3/8	1/4	26-1/2	40	12	3/16	22	15	19	2-1/2	
A10137	60	20	48	25-1/2	3/4	1/4	2	1/2	3/8	1/4	31-1/2	50	16	1/4	26	18-3/4	21	3-3/16	
A10138	80	20	63	25-1/2	1-1/4	1/4	2	3/4	3/8	1/4	45	66	16	1/4	36	18-3/4	21	3-3/16	
A10139	120	24	69	29-13/16	2	1/4	2	3/4	3/8	1/2	48	74	16	1/4	42	23-3/4	26-1/2	3-1/2	
A10140	200	30	72	36-1/2	2	1/4	2	1	3/8	1/2	48	86	18	1/4	42	27-1/2	30	4	
A10141	240	30	84	36-1/2	2	1/4	2	1	3/8	1/2	61	96	18	1/4	54	27-1/2	30	4	

HORIZONTAL WITH PEDESTAL FEET - LESS TOPPLATE



P/N	GAL	DIA	L	OPENINGS (NPT) "								DIMENSIONS "											
				A	B	C	D	E	F	G	H	J	K	T	M	N	P	Q	R	S			
A10123	30	16	38	1-1/2	1-1/2	1/2	1/4	22	4	9	12	2.63	19.31	.134	22	24.5	31	.135	.25	3			
A10124	60	20	48	2	1-1/2	1-1/2	1/2	27	5	11	14	3.19	24.38	.135	26	28.5	42	.188	.25	4			
A10125	80	20	63	2	1-1/2	1-1/2	3/4	42	5	11	14	3.19	24.38	.135	26	28.5	57	.188	.25	4			
A10126	120	24	69	2	1-1/2	1-1/2	3/4	42	7	13	16	4.19	30.38	.188	32	34.5	61	.188	.38	6			
A10127	200	30	72	2	1-1/2	1-1/2	1	42	10	16	19	5.25	36.5	.188	40	42.5	60	.25	.5	9			
A10128	240	30	84	2	1-1/2	1-1/2	1	54	10	16	19	5.25	36.5	.188	40	42.5	72	.25	.5	9			

GASOLINE DRIVEN UNITS

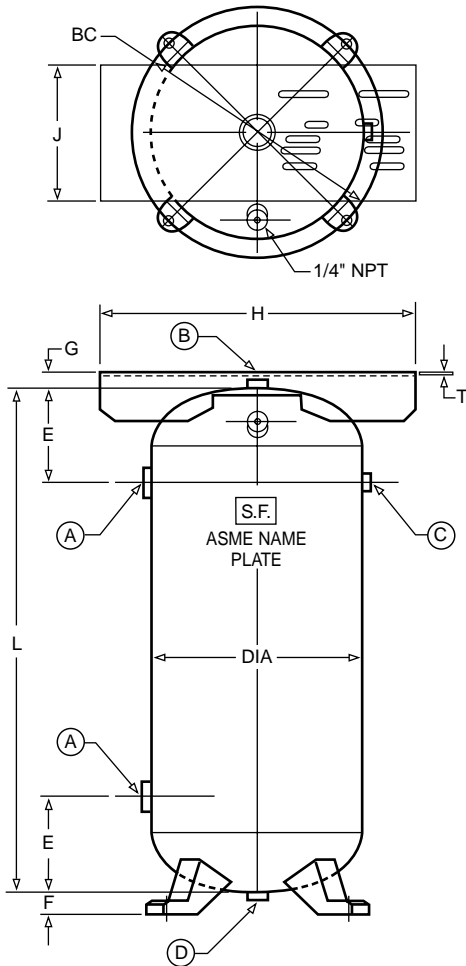


P/N	GAL	DIA	L	OPENINGS (NPT) "					DIMENSIONS "									
				A	B	C	D	F	G	H	J	K	L	M	N	P	TP	
A10039	30	16	38	1-1/2	3/4	1/4	1/4	13	5-1/2	2-1/2	20	1/4	38	15	19	20-3/4	38-1/2	

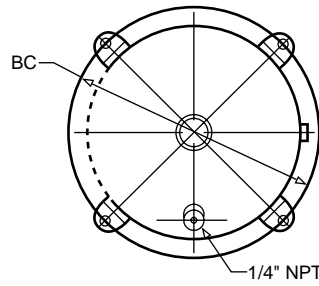
VERTICAL AIR RECEIVERS

With Topplate

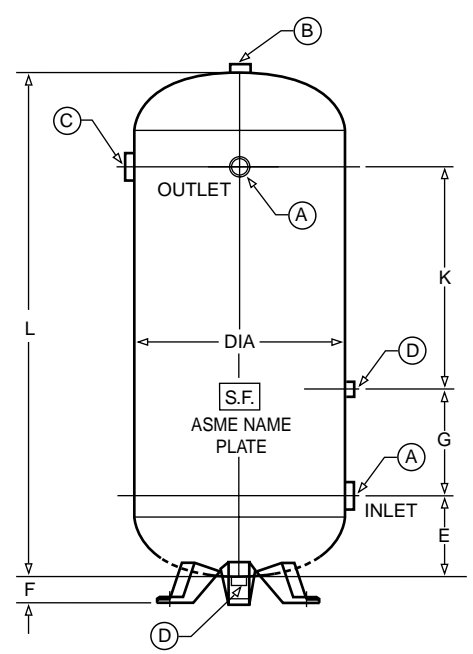
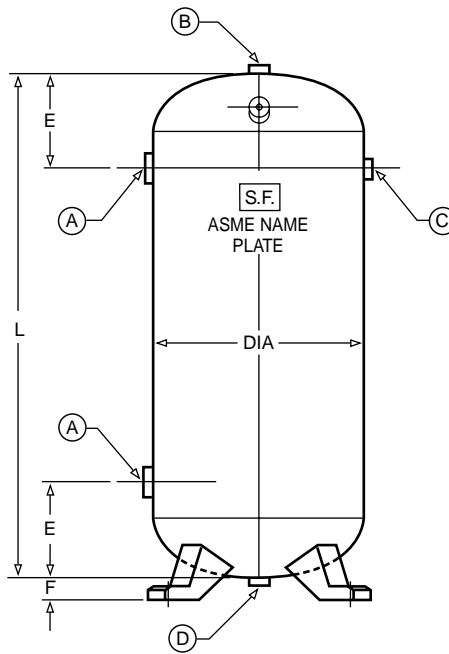
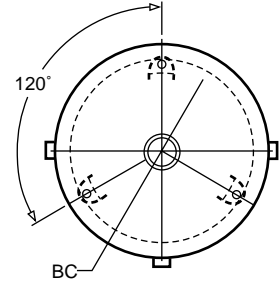
Less Topplate



DESIGN A



DESIGN B



WITH TOPPLATE

P/N	GAL	DIA	L	PSI	OPENINGS (NPT) "				DIMENSIONS "							
					A	B	C	D	E	F	G	H	J	K	T	BC
A10041	30	16	38	200	1-1/2	1/2	1/4	1/4	8	1-3/4	1-1/2	23	9	-	3/16	18-3/4
A10044	60	20	48	200	2	3/4	1/4	1/4	9	2-1/4	1-1/2	30	13	-	3/16	23-3/4
A10046	80	24	46	200	2	1	1/4	1/2	11	3-3/8	1-1/2	30	13	-	3/16	25-1/2
A10047*	120	30	46	200	2	1	1/4	1/2	12	6	3-7/8	39	15	-	1/4	26

DESIGN A - LESS TOPPLATE

A10040	30	16	38	200	1-1/2	1/2	1/4	1/4	8	1-3/4	-	-	-	-	-	18-3/4
A10043	60	20	48	200	2	3/4	1/4	1/4	9	2-1/4	-	-	-	-	-	23-3/4
A10045	80	24	46	200	2	3/4	1/4	1/2	11	3-3/8	-	-	-	-	-	25-1/2

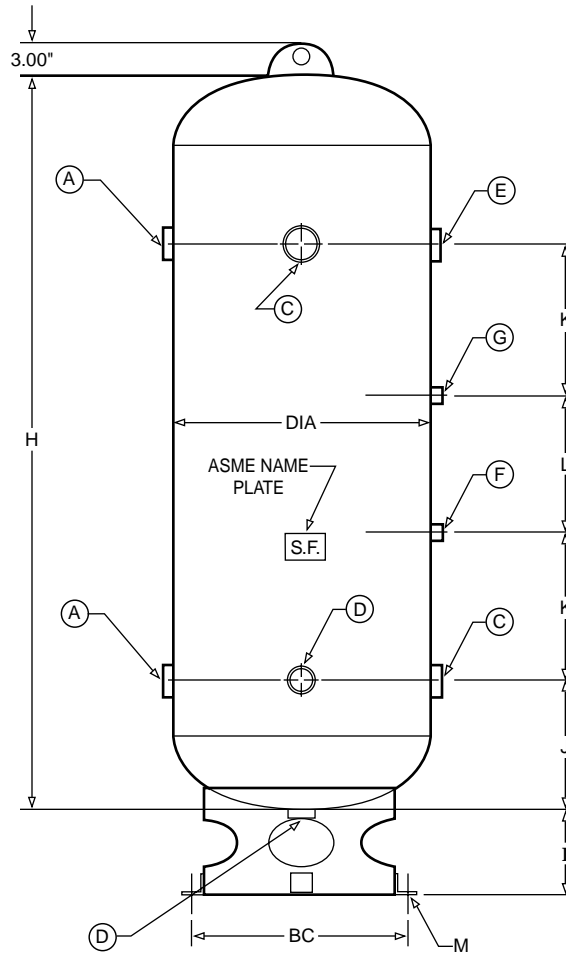
DESIGN B - LESS TOPPLATE

A11175	80	20	63	200	2	1	1/2	1/2	10	2-1/4	21	-	-	22	-	23-3/4
A11176	120	24	69	200	2	1	1/2	1/2	12	3-3/8	26	-	-	18	-	25-1/2
A11177	200	30	72	200	2	1	1/2	1/2	12	3-3/8	15	-	-	32	-	25-1/2
A11178	240	30	84	200	2	1	1/2	1/2	12	3-3/8	19	-	-	40	-	25-1/2

* Skirt instead of pressed steel feet

INDUSTRIAL VERTICALS

20" to 36' Diameter

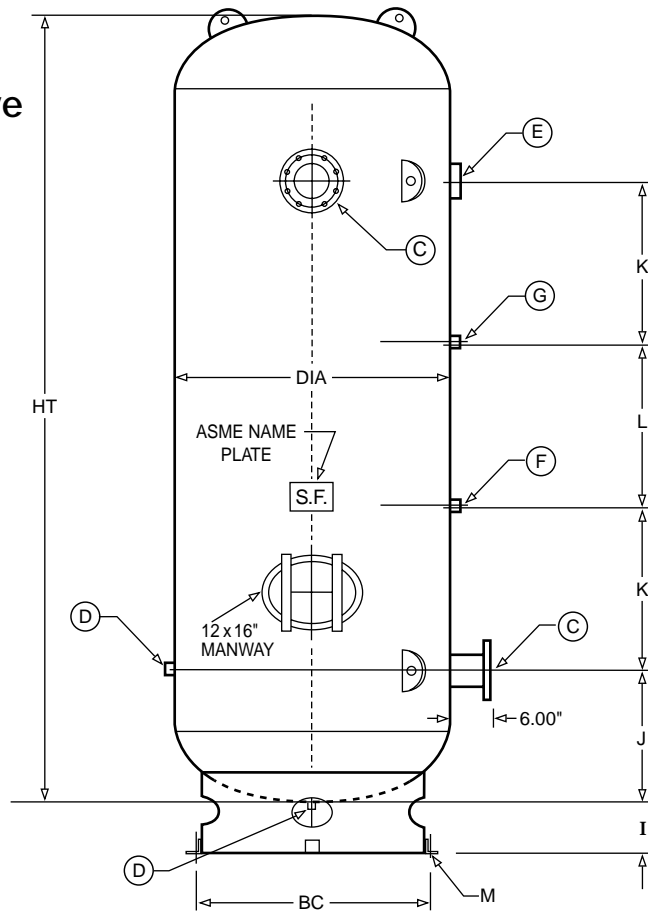


P/N	PSI	GAL	DIA	H	OPENINGS (NPT) "						DIMENSIONS "					
					A	C	D	E	F	G	I	J	K	L	M	BC
A10325	200	80	20	63	2	2	1/2	3/4	1/2	1/4	6	10	11	21	11/16	17
A10049	200	120	24	69	2	2	1	1-1/2	1/2	1/4	8	12	14	13	11/16	20
A10051	200	200	30	72	2	2	1	2	1/2	1/4	8	12	16	15	11/16	26
A10053	200	240	30	84	2	2	1	2	1/2	1/4	8	12	20	19	11/16	26
A10054	137	400	36	93	2	3	1	2-1/2	1/2	1/4	8	16	20	20	11/16	32
A10055	165															
A10056	200															
A10129	165	500	36	117	2	3	1	3	1/2	1/4	8	18	26	25	11/16	32
A10130	200															

Note: Other sizes and pressures are available upon request.

INDUSTRIAL VERTICALS

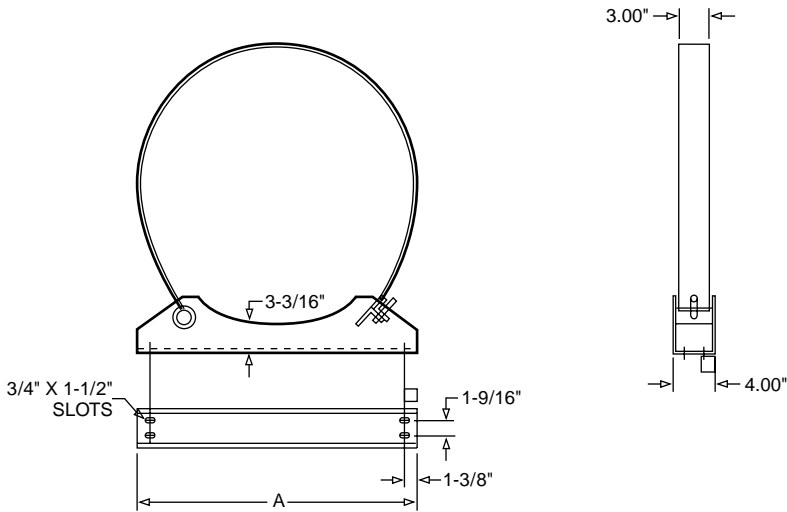
42" Diameter and above



P/N	PSI	GAL	DIA	HT	FLANGE		OPENINGS (NPT) "					DIMENSIONS "					
						C	D	E	F	G	I	J	K	L	M	BC	
A10131*	150	660	42	120	-	4	1	3	1	1/4	8	20	25	25	11/16	38	
A10132*	150	1060	48	144	-	6	1	3	1	1/4	8	24	32	32	11/16	38	
A10330*	190																
C102832	137	1350	54	148	-	6	1-1/4	3	1	1/4	8	26	32	32	11/16	44	
C102866	165																
A10300	137	1550	54	166	-	6	1-1/4	3	1	1/4	8	26	38	38	11/16	44	
C102833	150	1660	60	150	-	6	1-1/4	3	1	1/4	8	26	32	30	11/16	44	
A10333	150	2000	60	174	-	6	1-1/4	3	1	1/4	8	26	38	38	11/16	44	
A10336	150	2560	60	220	-	6	1-1/4	3	1	1/4	8	26	56	56	11/16	44	
A10064	125	3000	66	214	-	6	1-1/4	3	1	1/4	8	26	46	46	11/16	50	
A10339	137																
A10065	125	3800	72	228	-	6	1-1/4	3	1	1/4	8	30	56	56	11/16	58	
A10340	150																
C101557	125	4500	78	235	-	6	1-1/4	3	1	1/4	8	34	50	67	7/8	58	
C101558	150																
C101559	125	5200	84	238	-	6	1-1/4	3	1	1/4	8	34	50	70	7/8	-	
C101560	150																
C101561	125	6000	90	241	-	6	1-1/4	3	1	1/4	8	36	50	72	7/8	-	
C101562	150																
C101563	125	7000	96	244	-	6	1-1/4	3	1	1/4	8	38	50	68	7/8	-	
C101564	150																
C101565	125	8000	102	247	-	6	1-1/4	3	1	1/4	8	40	50	70	7/8	-	
C101566	150																

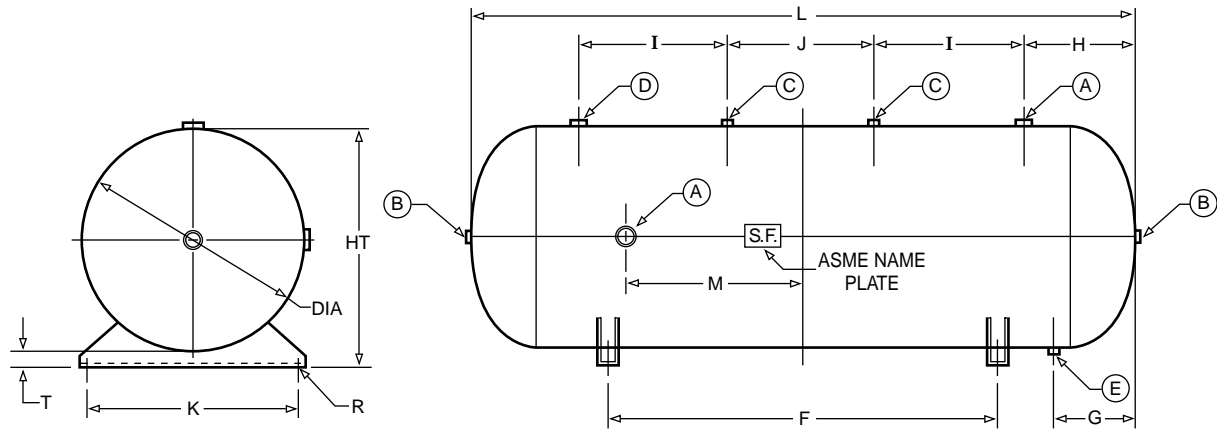
* These designs have lifting lugs on top head only.
 Note: Other sizes and pressures are available upon request.

WALL - TRUCK - CEILING MOUNTS FOR SLICK RECEIVERS



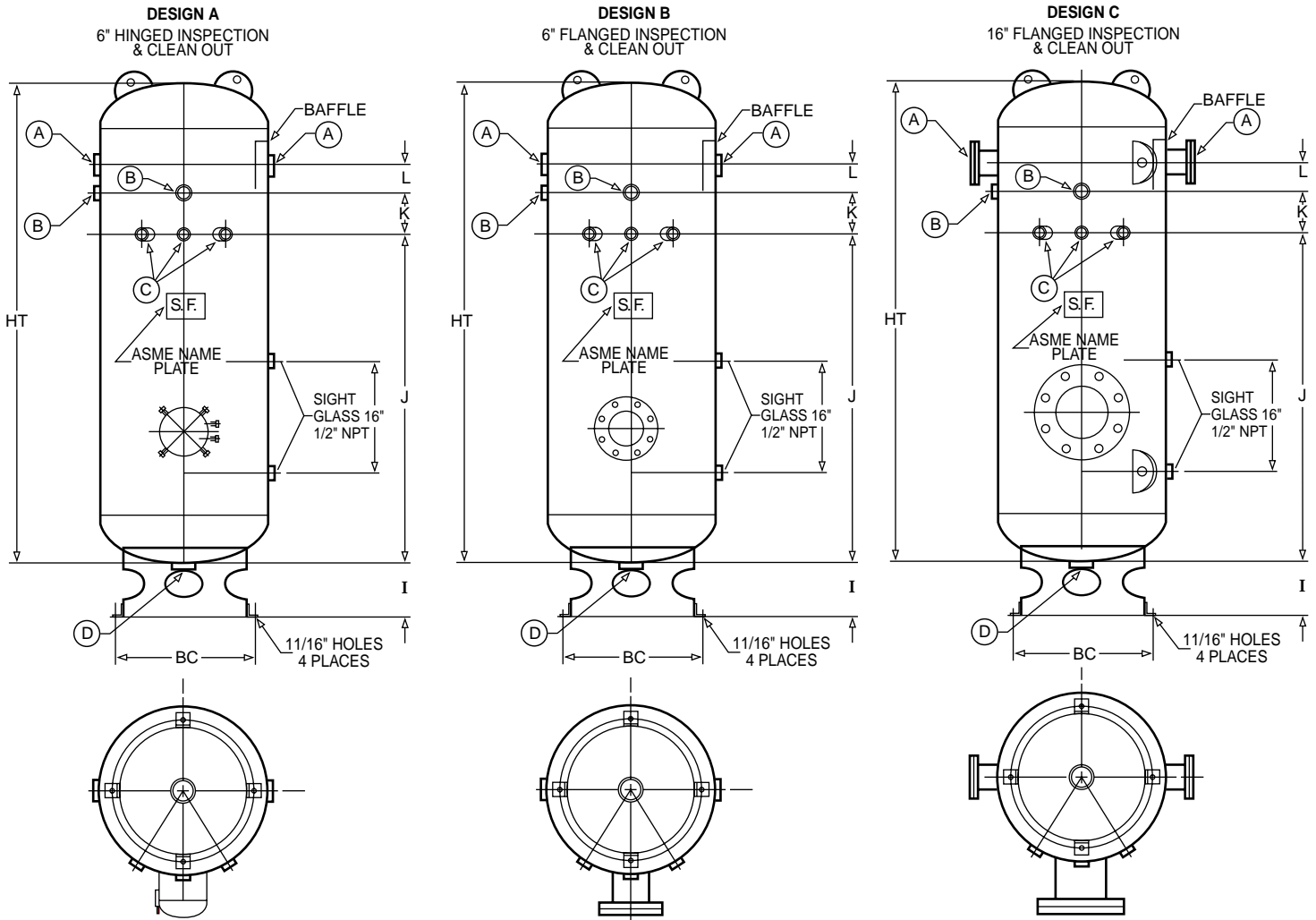
PART NUMBER	DIMENSIONS	
	DIA"	A"
S100147	16	13-1/2
S100148	20	18-3/4
S100149	24	23-3/4
S100150	30	27-1/2

INDUSTRIAL HORIZONTAL AIR RECEIVERS WITH FEET ONLY



P/N	PSI	GAL	DIA	OPENINGS (NPT) "						DIMENSIONS "									
				L	A	B	C	D	E	F	G	H	I	J	K	R	M	HT	T
A10344	137	400	36	93	3	2	1/2	1-1/2	3/4	56	14	15	21	22	32	3/4	21	39	3
A10346	165																		
A10348	200																		
A10352	165	500	36	116	3	2	1/2	1-1/2	3/4	72	14	15	21	38	32	3/4	29	39	3
A10354	200																		

VACUUM RECEIVERS



PART NUMBER						OPENINGS (NPT) "				DIMENSIONS "				
DESIGN A	DESIGN B	GAL	DIA	HT	A	B	C	D	I	J	K	L	BC	
V10001*	V10011*	30	16	38	3	1	1/2	1-1/2	1-3/4	20	6	4	18-3/4	
V10002*	V10012*	60	20	48	3	1	1/2	2	2-1/4	29	6	4	23-3/4	
V10003	V10013	80	20	63	3	1	1/2	2	6	42	6	4	17	
V10004	V10014	120	24	69	3	1	1/2	2	8	47	6	4	20	
V10005	V10015	200	30	72	3	1	1/2	2	8	50	6	4	26	
V10006	V10016	240	30	84	3	1	1/2	2	8	62	6	4	26	
V10007	V10017	400	36	96	3	1	1/2	2	8	70	6	4	32	
V10008	V10018	500	36	116	4	1	1/2	2	8	78	8	12	32	

PART NUMBER					FLG	OPENINGS (NPT) "				DIMENSIONS "				
DESIGN C		GAL	DIA	HT	A	B	C	D	I	J	K	L	BC	
V10019		660	42	120	6	1	1/2	2	8	78	8	14	38	
V10020		1060	48	144	6	1	1/2	2	8	78	10	32	38	
V10021		1550	54	166	6	1	1/2	2	8	78	10	52	44	
V10022		2000	60	174	6	1	1/2	2	8	78	10	60	44	
V10023		2560	60	220	8	1	1/2	2	8	78	10	106	44	
V10024		3000	66	214	8	1	1/2	2	8	78	10	98	60	
V10025		3800	72	228	8	1	1/2	2	8	78	10	110	58	
V10026		4500	78	235	8	1	1/2	2	8	78	10	109	70	
V10027		5200	84	238	8	1	1/2	2	8	78	10	110	78	

- * These designs have 4 pressed steel feet.
- FLG = CL 150 Slip on flange (S.O.F.)
- 30 through 500 gallon vacuum receivers are available less clean out.